

Scaled data based on original data using
LM-79-08 Approved Method: Electrical and Photometric Measurements of Solid-
State Lighting Products

Test Report Prepared for
Cooper Lighting Solutions
(formerly Eaton)

Brand: INVUE

Report Number: P150509

Luminaire Tested: **VWM-E03-LED-E1-SL3-HSS-7030**

Issue Date: 03/03/2020

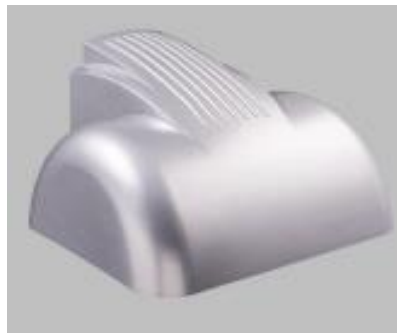
Test Information

Test Method: LM-79-08
Report Number: P150509
REPORT IS SCALED FROM IESNA LM-79-08 TEST DATA (P33727)
Test Lab: INNOVATION CENTER-P3
Issue Date: 03/03/2020
Manufacturer: COOPER LIGHTING SOLUTIONS (FORMERLY EATON)
Product Line: INVUE
Catalog Number: VWM-E03-LED-E1-SL3-HSS-7030
Description: VISION WALL MEDIUM LED LUMINAIRE
(3) LIGHTBARS WITH AccuLED OPTICS - TYPE 3 W/ SPILL LIGHT CONTROL AND HOUSE SIDE SHIELD
Light Source: (63) 3000K CCT, 70 CRI LEDs
Ballast/Driver: -

Summary

Lumens per Lamp: N/A
Luminaire Lumens: 4750.8 lumens
Efficiency: N/A
Efficacy: 63.2 lumens/watt
Luminous Opening: Rectangular (W 0.5' x L: 1' x H: 0')
IES Classification: Type III - Short - Non-Cutoff
BUG Rating: B0 - U0 - G2

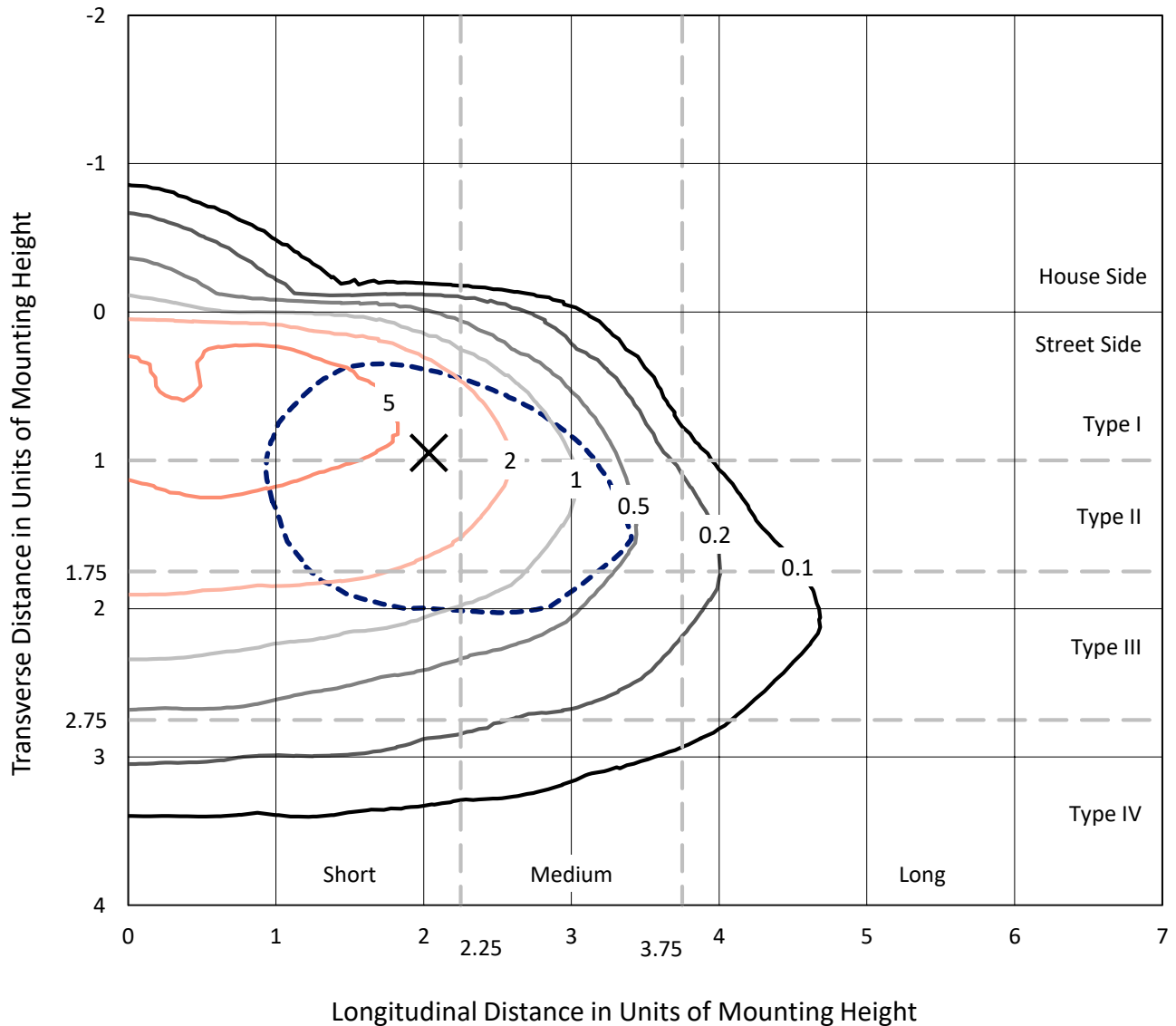
Input Watts (W): 75.2
Input Voltage (V): NR
Input Current (Ain): NR
Voltage Rise (V): NR
Power Factor: NR
Total Harmonic Distortion (THDi): NR
Frequency (hertz): 60
Stabilization Time: NR
Operation Time: NR
Ambient Temperature (°C): NR
Test Distance: 25 FT



REPORT NUMBER: P150509
 CATALOG NUMBER: VWM-E03-LED-E1-SL3-HSS-7030

Iso-Footcandle Lines of Horizontal Illumination

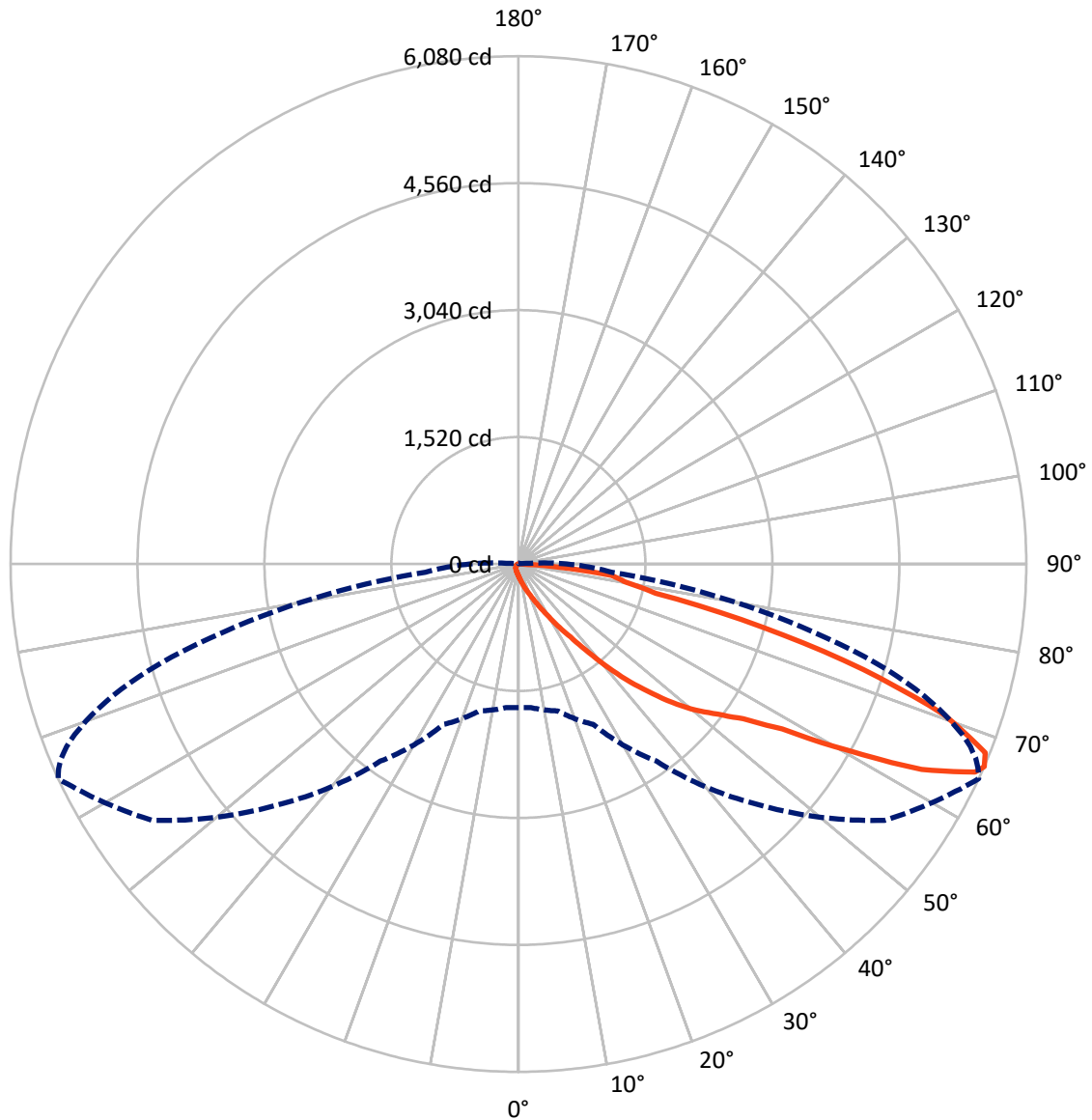
✕ Max cd
 - - - 1/2 Max cd



Based on 10 foot mounting height. Maximum calculated value = 7.8 fc
 Type III - Short - Non-Cutoff

REPORT NUMBER: P150509
CATALOG NUMBER: VWM-E03-LED-E1-SL3-HSS-7030

Luminous Intensity Polar Plot



— Vertical Plane Through 65-Deg Lateral - - - Horizontal Cone Through 66-Deg Vertical

REPORT NUMBER: P150509

CATALOG NUMBER: VWM-E03-LED-E1-SL3-HSS-7030

FLUX DISTRIBUTION:

		Downward	Upward	Total
House Side	Lumens	103.0	0.0	103.0
	% Fixture	2.2	0.0	2.2
Street Side	Lumens	4647.8	0.0	4647.8
	% Fixture	97.8	0.0	97.8
Total	Lumens	4750.8	0.0	4750.8
	% Fixture	100.0	0.0	100.0

Coefficient of Utilization

ZONAL LUMENS:

Zone	Lumens	% Fixture
0°-10°	16.1	0.3
10°-20°	68.1	1.4
20°-30°	146.8	3.1
30°-40°	313.5	6.6
40°-50°	693.3	14.6
50°-60°	1174.9	24.7
60°-70°	1567.9	33.0
70°-80°	690.6	14.5
80°-90°	79.6	1.7
90°-100°	0.0	0.0
100°-110°	0.0	0.0
110°-120°	0.0	0.0
120°-130°	0.0	0.0
130°-140°	0.0	0.0
140°-150°	0.0	0.0
150°-160°	0.0	0.0
160°-170°	0.0	0.0
170°-180°	0.0	0.0
0°-90°	4750.8	100.0
0°-180°	4750.8	100.0



REPORT NUMBER: P150509

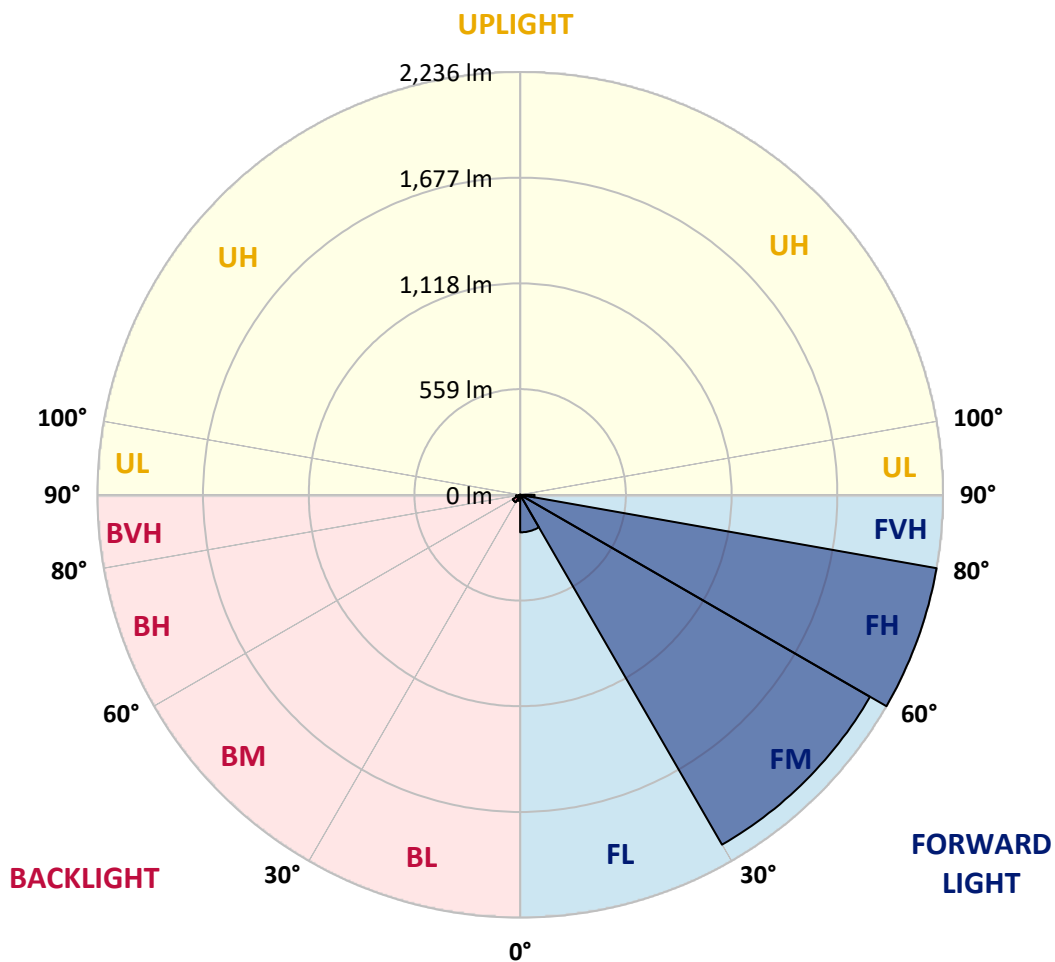
CATALOG NUMBER: VWM-E03-LED-E1-SL3-HSS-7030

LUMINAIRE CLASSIFICATION SYSTEM LUMEN TABLE AND BUG RATING:

Zone		Lumens	% Fixture	Zone Rating/Lumen Limit		
				B	U	G
FL	(0°-30°)	198.4	4.2			
FM	(30°-60°)	2136.6	45.0			
FH	(60°-80°)	2236.4	47.1			G2/5000
FVH	(80°-90°)	76.4	1.6			G1/100
BL	(0°-30°)	32.5	0.7	B0/110		
BM	(30°-60°)	45.2	1.0	B0/220		
BH	(60°-80°)	22.1	0.5	B0/110		G0/110
BVH	(80°-90°)	3.2	0.1			G0/10
UL	(90°-100°)	0.0	0.0		U0/0	
UH	(100°-180°)	0.0	0.0		U0/0	

BUG Rating: B0-U0-G2

Type III Short





REPORT NUMBER: P150509
 CATALOG NUMBER: VWM-E03-LED-E1-SL3-HSS-7030

CANDELA DISTRIBUTION (FULL):

	0°	5°	15°	25°	35°	45°	55°	65°	66°	67°	68°
0°	143.4	143.4	143.4	143.4	143.4	143.4	143.4	143.4	143.4	143.4	143.4
2.5°	180.8	179.9	176.3	176.3	170.8	167.1	162.6	158.0	158.0	157.1	156.2
5°	239.3	233.8	232.9	222.9	214.6	202.8	191.8	177.2	175.4	173.5	172.6
7.5°	304.1	303.2	295.0	283.1	266.7	244.8	222.9	199.1	195.5	193.6	190.0
10°	388.2	383.6	372.6	352.6	327.9	298.7	263.0	225.6	221.0	217.4	215.6
12.5°	468.5	460.3	453.9	428.4	397.3	354.4	311.5	257.6	253.9	249.3	242.0
15°	543.4	536.1	525.2	503.3	468.5	414.7	364.4	298.7	289.5	283.1	277.7
17.5°	601.9	597.3	584.5	559.9	522.4	474.9	414.7	340.7	333.4	325.2	315.1
20°	657.6	651.2	631.1	597.3	557.1	520.6	474.0	395.5	385.4	375.4	364.4
22.5°	710.6	704.2	671.3	615.6	572.7	557.1	540.7	457.6	442.1	433.8	422.9
25°	784.6	770.9	719.7	631.1	573.6	585.5	613.8	538.0	523.3	511.5	494.1
27.5°	884.1	865.9	785.5	654.0	577.2	616.5	697.8	635.7	620.2	606.5	587.3
30°	996.5	984.6	888.7	708.8	603.7	662.2	791.9	759.9	741.6	725.2	702.4
32.5°	1109.7	1093.3	998.3	812.9	675.0	750.8	909.7	904.2	880.5	864.9	840.3
35°	1209.3	1201.1	1130.7	983.7	837.5	906.0	1066.8	1073.2	1052.2	1035.7	1008.3
37.5°	1276.9	1276.9	1263.2	1167.3	1096.0	1147.2	1297.9	1298.8	1277.8	1240.3	1226.6
40°	1311.6	1321.6	1370.9	1389.2	1385.6	1451.3	1601.1	1584.7	1567.3	1548.1	1502.5
42.5°	1382.8	1391.9	1497.0	1623.0	1705.2	1792.0	1895.2	1889.7	1868.7	1834.0	1792.0
45°	1503.4	1515.2	1640.4	1840.4	2009.4	2132.7	2198.4	2172.9	2151.9	2119.0	2097.1
47.5°	1656.8	1679.7	1821.2	2068.7	2272.4	2476.1	2544.6	2477.0	2458.7	2433.2	2397.5
50°	1820.3	1842.2	1992.9	2276.1	2506.2	2749.2	2863.4	2749.2	2722.7	2714.5	2674.3
52.5°	1961.9	1980.1	2125.4	2435.9	2685.2	2970.2	3136.4	2985.7	2966.6	2939.2	2909.9
55°	2045.9	2060.5	2196.6	2512.6	2806.7	3169.3	3400.4	3268.0	3239.7	3228.7	3186.7
57.5°	2074.2	2088.8	2211.2	2522.7	2872.5	3351.1	3721.0	3725.6	3691.8	3652.5	3639.7
60°	2074.2	2090.7	2193.9	2498.0	2936.4	3544.7	4148.4	4529.3	4456.2	4448.9	4402.3
62.5°	1988.4	2003.9	2108.0	2422.2	3022.3	3805.9	4743.9	5416.2	5395.2	5347.7	5270.9
65°	1802.0	1811.2	1913.5	2228.6	2989.4	4046.1	5260.0	6006.2	5972.4	5879.2	5780.6
66°	1718.0	1725.3	1821.2	2118.1	2881.6	4079.0	5351.3	6080.2	6024.5	5945.9	5834.5
67.5°	1596.5	1609.3	1676.9	1912.6	2623.1	3964.9	5293.8	6028.1	5979.7	5884.7	5773.3
70°	1065.9	1056.7	1295.1	1467.8	1998.4	3230.5	4749.4	5412.5	5413.4	5368.7	5323.9
72.5°	506.0	511.5	580.9	903.3	1307.9	2158.2	3780.4	4320.1	4382.3	4301.9	4246.2
75°	363.5	371.7	413.7	552.6	780.0	1295.1	2450.5	3021.4	3023.2	2880.7	2753.8
77.5°	105.9	110.5	155.3	340.7	584.5	874.1	1407.5	1679.7	1640.4	1538.1	1442.2
80°	43.8	43.8	45.7	108.7	234.7	593.7	984.6	1293.3	1288.7	1249.5	1192.8
82.5°	16.4	17.4	21.9	44.8	55.7	146.1	656.7	1122.5	1119.8	1064.1	1023.9
85°	1.8	1.8	5.5	19.2	21.0	27.4	131.5	495.0	492.3	495.0	433.8
87.5°	0.0	0.0	0.9	1.8	2.7	3.7	5.5	19.2	21.0	20.1	18.3
90°	0.0	0.0	0.0	0.0	0.0	0.0	0.0	0.0	0.0	0.0	0.0



REPORT NUMBER: P150509
 CATALOG NUMBER: VWM-E03-LED-E1-SL3-HSS-7030

CANDELA DISTRIBUTION (continued):

	69°	70°	71°	72°	73°	74°	75°	76°	77°	78°	79°
0°	143.4	143.4	143.4	143.4	143.4	143.4	143.4	143.4	143.4	143.4	143.4
2.5°	156.2	154.4	154.4	153.4	153.4	153.4	152.5	151.6	151.6	150.7	149.8
5°	170.8	169.0	168.1	166.2	165.3	164.4	162.6	161.7	159.8	158.9	158.0
7.5°	188.2	184.5	183.6	180.8	178.1	176.3	174.4	171.7	169.9	166.2	165.3
10°	210.1	205.5	201.9	198.2	195.5	190.9	188.2	184.5	180.8	178.1	175.4
12.5°	238.4	232.0	226.5	222.9	216.5	211.0	205.5	202.8	195.5	191.8	187.2
15°	269.4	262.1	255.7	248.4	243.9	234.7	227.4	219.2	215.6	209.2	201.9
17.5°	309.6	297.8	287.7	280.4	271.3	262.1	253.9	245.7	234.7	227.4	218.3
20°	352.6	342.5	328.8	316.0	305.1	294.1	282.2	271.3	261.2	249.3	238.4
22.5°	407.4	392.7	376.3	363.5	348.9	337.0	320.6	306.0	289.5	274.0	261.2
25°	476.8	457.6	442.1	423.8	406.4	388.2	368.1	349.8	328.8	314.2	292.3
27.5°	562.6	544.4	523.3	499.6	482.2	454.8	428.4	405.5	380.9	358.0	333.4
30°	672.2	645.7	623.8	601.0	566.3	539.8	508.7	477.7	443.9	421.1	383.6
32.5°	803.7	775.4	742.6	709.7	677.7	640.3	601.9	563.5	526.1	484.1	445.7
35°	964.5	930.7	893.3	857.6	808.3	768.1	719.7	666.7	624.7	576.3	527.9
37.5°	1177.3	1121.6	1088.7	1051.3	984.6	929.8	875.9	822.9	748.9	697.8	629.3
40°	1444.0	1411.1	1357.2	1297.0	1236.7	1164.5	1091.5	1021.1	935.3	864.0	784.6
42.5°	1757.3	1708.9	1654.1	1567.3	1506.1	1421.2	1338.1	1244.9	1139.9	1048.5	955.4
45°	2051.4	1993.8	1951.8	1865.1	1801.1	1700.7	1600.2	1501.5	1380.1	1262.3	1154.5
47.5°	2369.2	2321.7	2252.3	2182.0	2117.1	2003.9	1895.2	1775.6	1647.7	1507.9	1368.2
50°	2648.7	2611.3	2563.8	2478.8	2406.7	2311.7	2183.8	2053.2	1891.5	1752.7	1593.8
52.5°	2886.2	2857.0	2790.3	2730.0	2665.2	2575.6	2461.5	2336.4	2161.9	2009.4	1828.5
55°	3166.6	3145.6	3087.1	3049.7	2992.1	2906.3	2799.4	2683.4	2498.9	2332.7	2128.1
57.5°	3626.0	3609.6	3558.4	3542.9	3486.3	3411.4	3279.8	3155.6	2940.1	2733.7	2499.8
60°	4386.8	4353.9	4279.0	4240.7	4121.0	4020.6	3849.8	3679.0	3418.7	3155.6	2874.3
62.5°	5201.5	5109.3	4966.8	4844.4	4674.5	4500.1	4271.7	4010.5	3705.5	3393.1	3069.8
65°	5640.9	5483.8	5303.8	5109.3	4889.2	4632.5	4344.8	4031.5	3703.6	3373.9	3032.3
66°	5691.1	5513.9	5323.0	5106.5	4861.8	4588.7	4296.4	3967.6	3626.9	3305.4	2963.8
67.5°	5628.1	5442.7	5240.8	5000.6	4735.7	4452.6	4145.7	3804.1	3476.2	3150.1	2817.7
70°	5186.9	5002.4	4822.5	4569.5	4287.3	4002.3	3711.9	3330.1	3019.5	2720.0	2424.0
72.5°	4142.0	4016.9	3838.8	3622.3	3347.4	3013.1	2771.1	2429.5	2160.1	1869.6	1640.4
75°	2588.4	2412.2	2192.0	1916.2	1706.1	1434.9	1293.3	1033.9	880.5	746.2	616.5
77.5°	1323.4	1191.0	1036.7	881.4	732.5	584.5	452.1	319.7	215.6	149.8	111.4
80°	1093.3	976.4	848.5	706.9	575.4	446.6	321.5	219.2	139.7	91.3	71.2
82.5°	903.3	804.7	690.5	559.0	444.8	350.7	243.9	158.9	98.6	63.9	50.2
85°	384.5	348.9	269.4	213.7	160.7	118.7	83.1	55.7	39.3	32.0	29.2
87.5°	16.4	18.3	17.4	13.7	10.0	10.0	9.1	7.3	7.3	7.3	7.3
90°	0.0	0.0	0.0	0.0	0.0	0.0	0.0	0.0	0.0	0.0	0.0



REPORT NUMBER: P150509
 CATALOG NUMBER: VWM-E03-LED-E1-SL3-HSS-7030

CANDELA DISTRIBUTION (continued):

	80°	81°	82°	83°	84°	85°	95°	105°	115°	125°	135°
0°	143.4	143.4	143.4	143.4	143.4	143.4	143.4	143.4	143.4	143.4	143.4
2.5°	149.8	148.9	148.0	148.0	147.0	146.1	140.7	136.1	130.6	127.0	123.3
5°	156.2	155.3	153.4	152.5	150.7	149.8	137.9	127.9	119.6	113.3	108.7
7.5°	162.6	161.7	158.9	156.2	155.3	153.4	134.3	121.5	110.5	103.2	98.6
10°	170.8	168.1	165.3	161.7	158.9	156.2	130.6	114.2	102.3	95.9	91.3
12.5°	182.7	178.1	173.5	169.0	165.3	160.7	128.8	107.8	95.9	88.6	84.0
15°	196.4	190.0	184.5	179.0	172.6	168.1	125.1	102.3	90.4	83.1	77.6
17.5°	209.2	201.9	193.6	185.4	179.0	172.6	121.5	96.8	84.9	77.6	72.2
20°	227.4	216.5	206.4	196.4	187.2	179.0	116.0	91.3	80.4	72.2	66.7
22.5°	247.5	234.7	221.9	208.2	196.4	185.4	111.4	86.8	75.8	67.6	61.2
25°	273.1	257.6	240.2	222.9	209.2	194.5	106.9	82.2	71.2	63.0	56.6
27.5°	308.7	286.8	267.6	245.7	224.7	208.2	103.2	78.5	66.7	58.5	52.1
30°	357.1	325.2	295.0	271.3	246.6	222.9	99.6	74.0	63.0	53.9	46.6
32.5°	411.0	373.6	338.9	303.2	272.2	244.8	95.9	70.3	58.5	49.3	42.9
35°	477.7	430.2	383.6	342.5	305.1	268.5	92.2	66.7	54.8	44.8	38.4
37.5°	573.6	514.2	453.0	400.0	351.6	303.2	89.5	63.0	50.2	40.2	33.8
40°	705.1	628.4	553.5	481.3	418.3	358.0	85.9	59.4	46.6	36.5	30.1
42.5°	847.6	754.4	655.8	574.5	487.7	411.9	82.2	55.7	42.9	32.9	26.5
45°	1024.8	908.8	789.1	678.6	572.7	474.9	78.5	52.1	38.4	29.2	22.8
47.5°	1218.4	1070.4	935.3	796.4	670.4	553.5	74.0	49.3	34.7	25.6	20.1
50°	1417.5	1261.3	1090.5	932.5	782.7	632.0	69.4	44.8	31.1	22.8	16.4
52.5°	1632.2	1447.7	1273.2	1076.8	902.4	735.2	64.8	41.1	28.3	20.1	13.7
55°	1905.2	1698.8	1494.2	1274.1	1064.1	854.9	60.3	36.5	24.7	17.4	11.0
57.5°	2248.7	2003.9	1752.7	1504.3	1249.5	1012.0	56.6	32.0	21.0	14.6	9.1
60°	2572.9	2287.0	1982.9	1697.0	1409.3	1132.6	51.1	28.3	18.3	11.9	9.1
62.5°	2741.0	2414.9	2087.0	1771.9	1465.0	1175.5	45.7	23.7	15.5	10.0	8.2
65°	2699.9	2367.4	2049.6	1731.7	1431.2	1148.1	40.2	21.0	13.7	9.1	8.2
66°	2640.5	2311.7	1992.0	1689.7	1402.9	1118.9	37.4	20.1	12.8	9.1	7.3
67.5°	2510.8	2193.0	1887.9	1606.6	1325.3	1063.1	33.8	18.3	11.9	8.2	7.3
70°	2144.5	1855.9	1612.1	1361.8	1132.6	896.0	27.4	15.5	10.0	7.3	7.3
72.5°	1419.3	1223.0	1060.4	912.4	762.6	591.9	22.8	12.8	8.2	7.3	6.4
75°	535.2	484.1	415.6	373.6	326.1	285.9	18.3	8.2	6.4	6.4	6.4
77.5°	95.0	87.7	77.6	71.2	65.8	60.3	14.6	5.5	5.5	6.4	6.4
80°	63.9	59.4	53.9	49.3	45.7	41.1	10.0	4.6	5.5	5.5	6.4
82.5°	45.7	42.9	40.2	36.5	33.8	30.1	6.4	4.6	5.5	5.5	5.5
85°	27.4	25.6	23.7	21.9	19.2	18.3	4.6	4.6	4.6	5.5	5.5
87.5°	7.3	6.4	7.3	7.3	5.5	6.4	3.7	3.7	3.7	4.6	4.6
90°	0.0	0.0	0.0	0.0	0.0	0.0	0.0	0.0	0.0	0.0	0.0



REPORT NUMBER: P150509

CATALOG NUMBER: VWM-E03-LED-E1-SL3-HSS-7030

CANDELA DISTRIBUTION (continued):

	145°	155°	165°	175°	180°
0°	143.4	143.4	143.4	143.4	143.4
2.5°	121.5	121.5	119.6	122.4	122.4
5°	105.0	105.0	104.1	105.0	105.0
7.5°	95.9	95.0	95.0	95.0	95.9
10°	87.7	86.8	86.8	86.8	86.8
12.5°	80.4	79.5	78.5	79.5	79.5
15°	74.0	72.2	72.2	72.2	72.2
17.5°	68.5	66.7	65.8	65.8	65.8
20°	63.0	60.3	60.3	60.3	60.3
22.5°	57.5	54.8	54.8	54.8	54.8
25°	52.1	49.3	49.3	49.3	49.3
27.5°	47.5	44.8	44.8	44.8	44.8
30°	42.0	40.2	40.2	41.1	40.2
32.5°	38.4	35.6	35.6	36.5	36.5
35°	33.8	32.0	32.0	32.0	32.0
37.5°	29.2	27.4	27.4	27.4	27.4
40°	25.6	23.7	22.8	23.7	23.7
42.5°	21.9	20.1	19.2	19.2	19.2
45°	19.2	16.4	15.5	16.4	16.4
47.5°	15.5	13.7	13.7	14.6	14.6
50°	11.9	11.9	12.8	14.6	14.6
52.5°	11.0	11.0	12.8	14.6	14.6
55°	10.0	11.0	12.8	13.7	14.6
57.5°	9.1	11.0	12.8	13.7	13.7
60°	9.1	10.0	11.9	13.7	13.7
62.5°	8.2	9.1	11.0	12.8	12.8
65°	8.2	9.1	11.0	12.8	12.8
66°	8.2	9.1	11.0	12.8	12.8
67.5°	8.2	9.1	11.0	12.8	12.8
70°	8.2	9.1	11.0	11.9	11.9
72.5°	7.3	8.2	10.0	11.9	11.9
75°	7.3	8.2	10.0	11.9	11.9
77.5°	7.3	8.2	10.0	11.9	11.9
80°	7.3	8.2	10.0	11.0	11.9
82.5°	6.4	8.2	9.1	11.0	11.0
85°	6.4	7.3	9.1	10.0	11.0
87.5°	5.5	6.4	7.3	9.1	9.1
90°	0.0	0.0	0.0	0.0	0.0

(END OF REPORT)